

Bluetooth USB Adapter Parani™ SD1000U

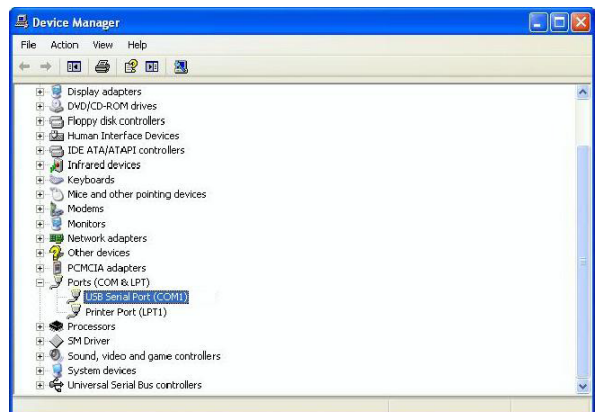
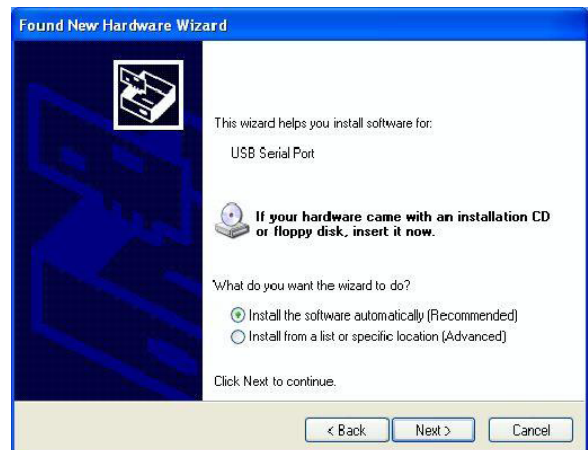
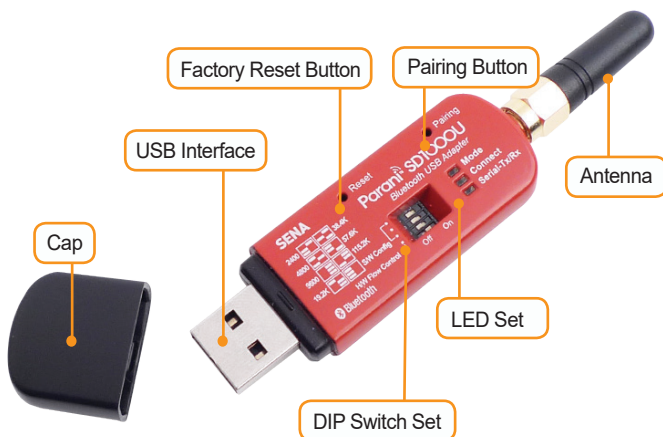


Features

- Bluetooth Specification v2.0 + EDR Class 1
- Working distance (in an open field): Normally 300 meters, up to 600m with 5 dBi dipole and 1000m using 9 dBi patch antenna
- USB 2.0 interface
- Supports Windows, Linux, Mac OS and Windows CE.NET and Android operating systems.
- No Bluetooth driver required! Works as USB-to-RS232 adapter using the standard FTDI driver. Installs as USB Serial Port!
- Provides transparent RS232 serial cable replacement for PC
- Supports Bluetooth Serial Port Profile (SPP)
- Supports up to 4 multiple simultaneous connections
- Interoperability with laptops, PDA terminals etc.
- Easy to use Windows configuration tool available.

The Parani-SD1000U is a Class 1 type Bluetooth USB adapter for Serial Port Replacement that supports 300 meters of wireless transmission distance by default. The working distance can be further extended up to 600 meters using 5 dBi dipole antenna. This adapter works as an USB-to-RS232 converter but wireless. It is suitable for industrial and special applications because it can cover longer communication distance (1000 m) over other regular Bluetooth USB adapter accessories with Patch antennas.

Exterior



Specifications

Standards

- Bluetooth 2.0 + EDR Class 1
- USB 2.0

Max Transfer Rate

- 3 Mbps (EDR)

Frequency Range

- 2.402 ~ 2.480GHz

Transmit Output Power

- +18dBm

Receive Sensitivity

- Basic 1 Mbps: -90 dBm
- EDR 2 Mbps: -88 dBm
- EDR 3 Mbps: -87 dBm

Diagnostic LED

- Mode
- Connect
- Serial-Rx/Tx

Antenna Connector

- RP-SMA

Antenna Gain

- Default Stub Antenna: 1 dBi
- Optional Dipole Antennas: 3 dBi & 5 dBi, Patch Antenna: 9 dBi

Working Distance (In Open Field)

Stub Antenna	- Stub Antenna	300 meters
Dipole Antenna (3 dBi)	- Dipole Antenna (3 dBi)	400 meters
Dipole Antenna (5 dBi)	- Dipole Antenna (5 dBi)	600 meters
Patch Antenna (9 dBi)	- Patch Antenna (9 dBi)	1000 meters

Driver Software

FTDI(FT232R) USB-Serial driver in public domain
(<http://www.ftdichip.com/Drivers/VCP.htm>)
No special driver required.

Supported Bluetooth Profiles

- Serial Port Profile (SPP)

Computer OS Support

- Windows (32 + 64 Bit + R2 Versions)
- Windows 10
- Windows 8
- Windows 7
- Windows Server 2012
- Windows Server 2008
- Windows Vista
- Windows Server 2003
- Windows XP
- Windows 2000
- Windows ME
- Windows 98
- Linux
- Mac OS X
- Mac OS 9
- Mac OS 8
- Android
- Windows RT
- Windows CE.NET (Version 4.2 and greater)

Environmental

- Operating Temperature: -40°C ~ +85°C
- Storage Temperature: -40°C ~ +85°C
- Humidity: 90% Non-condensing

Physical properties

- Dimension (L x W x H)
 - 68 mm x 22 mm x 11.5mm (2.6 in x 0.8 in x 0.4 in) without cap
 - 71 mm x 22 mm x 11.5mm (2.7 in x 0.8 in x 0.4 in) with cap
 - 97 mm x 22 mm x 11.5mm (3.8 in x 0.8 in x 0.4 in) with cap & 1dBi antenna
- Weight: 56 g

Regulatory Approvals

- FCC, CE, TELEC, KC, IC, Bluetooth SIG

Warranty

- 1 year limited warranty

Ordering Information

SD1000U-G01 Includes

- Parani-SD1000U USB-RS232 Bluetooth Class 1 Adapter (BT-SD1000U)
- Stub Antenna SAT-G01R (BTSAT-G01R)
- Quick Start Guide
- CD-ROM including Driver, User guide and Data sheet

Optional Accessories

- SAT-G01R: 1 dBi Stub Antenna - RP-SMA Plug Right-hand Thread
- DAT-G01R: 3 dBi Dipole Antenna - RP-SMA Plug Right-hand Thread
- DAT5-G01R: 5 dBi Dipole Antenna - RP-SMA Plug Right-hand Thread
- PAT-G01R: 9 dBi Patch Antenna - RP-SMA Plug Right-hand Thread
- SEC-G01R: 15 cm Extension Cable (For SAT-G01R / DAT-G01R / DAT5-G01R)

